

MX Analyze

2.1 Upgrade FAQ's

April 2021



Manifest
MEDEX

Table of Contents

- Risk Classes 2
- Diagnosis and Disease Filters 8
 - Understanding Filter Behavior 10
 - Understanding the New Filters in Detail..... 10
 - 1. Acute Disease Group..... 10
 - 2. Chronic Disease Group 11
 - 3. Pregnant Status 12
 - 4. Tobacco Use..... 14
 - 5. SDOH and Lifestyle Factors 15
 - 6. BMI and Lifestyle Factors 19
 - 7. Other Factors Influencing Health..... 20
- Other Enhancements 23
- Last Refreshed 23
- Back Button..... 23

Risk Classes

The primary change reflected within MX Analyze is the addition of Risk Classes to simplify the categorization of risk across a population or for an individual.

1. Why did Manifest MedEx make this change?

To provide a simplified approach to categorizing risk.

2. Did the probabilistic risk scores go away?

No, the probabilistic risk scores remain. They are visible in the patient/member list when hovering over the risk class icon so that the list can be sorted numerically in any risk column. In addition, the probabilistic risk score is displayed in the Individual Profile on the Future Risk table and Risk Trend graph.

3. How were the Risk Classes developed?

A standard approach was developed based on relative risk to define standard Risk Class categories across all risk models. A standard approach was used to segment the patients into the new Risk Classes of Low, Moderate, High, and Very High.

Relative risk is calculated based on the risk bin rate compared to the overall population rate. Using inpatient admission Risk Classes as an example, if the Very High Risk Class has an inpatient admission rate of 60% and the overall population rate is 10%, the relative risk is 6 (60% / 10%); or 6 times the rate of the population rate.

The Risk Classes use the following relative risk ranges:

- Low Risk = relative risk < 1
- Moderate Risk = relative risk between 1 – 3
- High Risk = relative risk between 3 – 5
- Very High Risk = relative risk > 5

The following table is an illustrative example of the Risk Classes with the respective rates and calculations.

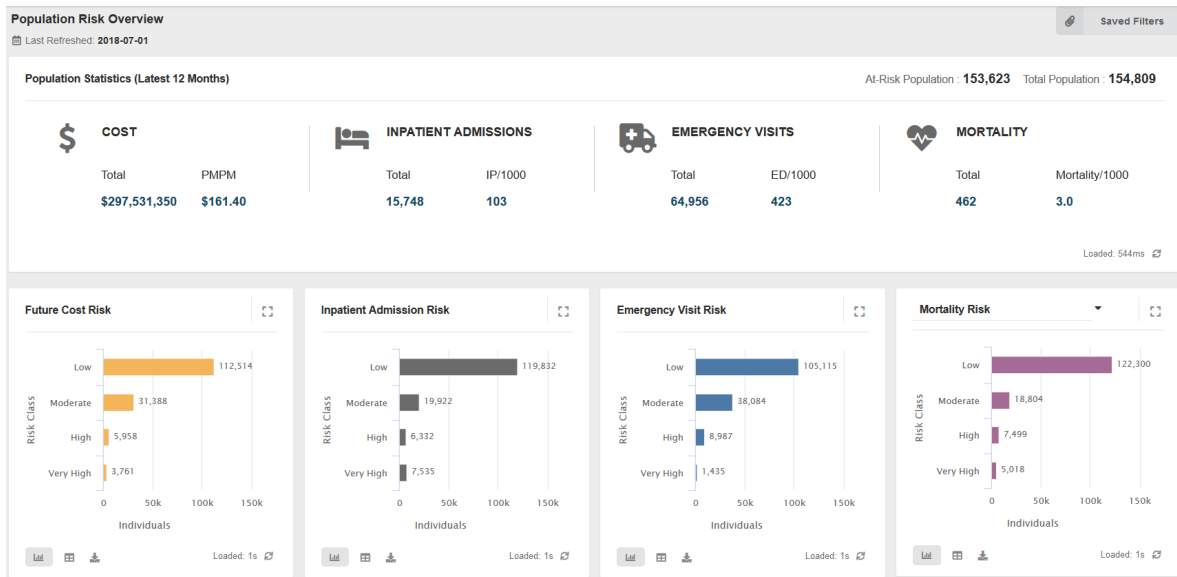
Risk Class:	Low	Moderate	High	Very High	Total Population
Relative Risk:	<1	1-3	3-5	>5	
Population	80,000	10,000	7,500	2,500	100,000
Population %	80.0	10.0	7.5	2.5	100.0
True Positives	3,500	2,000	3,000	1,500	10,000
Positive Predictive Value (PPV) %	4.4	20.0	40.0	60.0	10
Sensitivity %	35.0	20.0	30.0	15.0	100
Relative Risk	0.4	2.0	4.0	6.0	1.0

4. How does this change how Risk within a population is visualized?

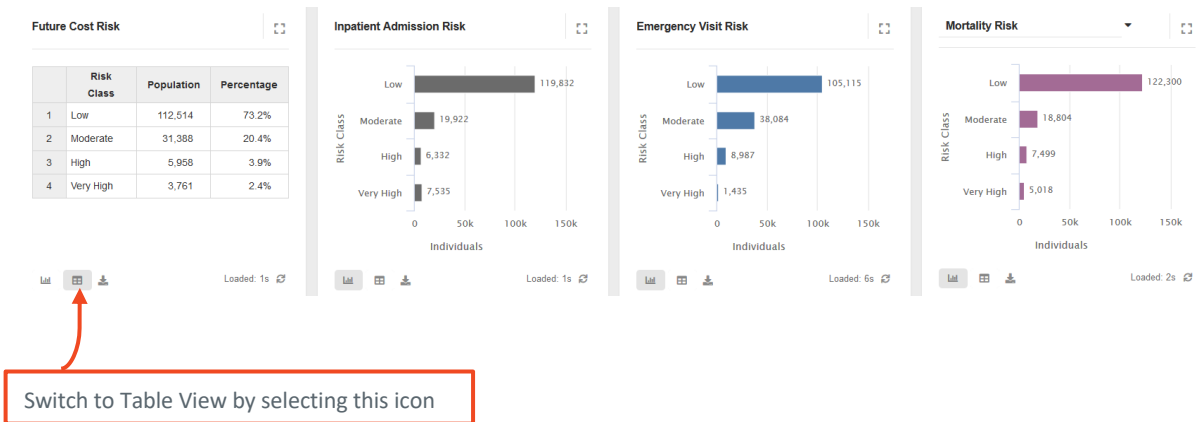
The population is stratified based on 4 levels of risk – Low (average or less than average risk), plus 3 levels of elevated risk, aligned with increasing relative risk as described above: Moderate, High, and Very High.

5. How are these changes reflected in the MX Analyze Dashboard?

The new Risk Classes are represented in the images below. The bar graphs provide a visual image of the risk distribution within the population. In addition, the number of individuals falling into each risk class is displayed at the end of the bar.



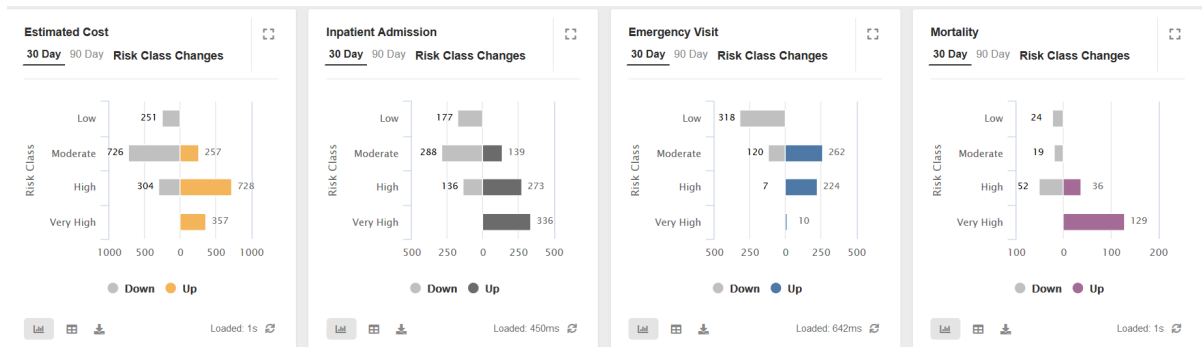
Selecting the Table View for Future Cost Risk, changes the visual representation in this way, providing both the population size and percentage within a table format.



The next row of the dashboard looks at changes in Risk Class in both the last 30 days and last 90 days (controlled by clicking on the day range preferred).

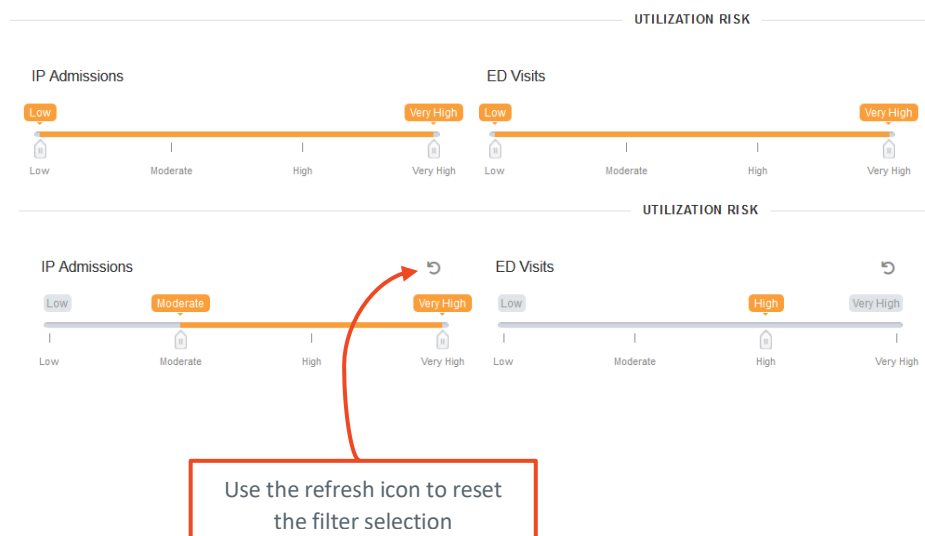
- The color-coded bars to the right represent the number of individuals in the population who experienced an increase in risk class over the last 30 (or 90) days.

- The grey bars to the left represent the number who experienced a decrease in risk class over the selected time period.



6. What other changes will we see in MX Analyze related to the addition of Risk Class?

- Both the Population Risk filters and the Risk Change filters have been modified to reflect the new risk classes of Low, Moderate, High, and Very High. The Population Risk filters maintain the slider bar format.
 - Move the left slider to the right, for example to Moderate to filter on Moderate – Very High Risk, or to Very High for just Very High Risk.
 - Move the left slider and the right slider to narrow down to a single Risk Class of Moderate or High.



- b. For Change in Risk, the filters are now represented in a check-box format. Select one or more boxes to filter on an increase or decrease in risk for utilization, an event, or condition.

- Demographic
- Attribution
- Geographic
- Dx and Disease
- Population Risk
- Risk Class Change

Risk Change Period (Required)
 30 Days

The Risk Change Period defaults to 30 days, or 90 days may be selected.

FUTURE COST

Predicted Future Cost
 Risk Increased To
 Risk Decreased To

Moderate
 High
 Very High

High
 Moderate
 Low

Check the box beside "Risk Increased To" (or "Risk Decreased To") and all elevated levels of risk will

UTILIZATION RISK

IP Admissions
 Risk Increased To
 Risk Decreased To

Moderate
 High
 Very High

High
 Moderate
 Low

ED Visits
 Risk Increased To
 Risk Decreased To

Moderate
 High
 Very High

High
 Moderate
 Low

Alternatively, check the specific risk level change(s) desired.

Risk Increased To
 Moderate
 High
 Very High

Risk Decreased To
 High
 Moderate
 Low

Risk Increased To
 Moderate
 High
 Very High

Risk Decreased To
 High
 Moderate
 Low

Risk Increased To
 Moderate
 High
 Very High

Risk Decreased To
 High
 Moderate
 Low

EVENT RISK

Acute Myocardial Infarction
 Risk Increased To
 Risk Decreased To

Moderate
 High
 Very High

High
 Moderate
 Low

Asthma Exacerbation
 Risk Increased To
 Risk Decreased To

Moderate
 High
 Very High

High
 Moderate
 Low

Cerebrovascular Accident
 Risk Increased To
 Risk Decreased To

Moderate
 High
 Very High

High
 Moderate
 Low

CONDITION RISK

Alzheimer's
 Risk Increased To
 Risk Decreased To

Moderate
 High
 Very High
 Present

High
 Moderate
 Low

Back/Spine Disorder
 Risk Increased To
 Risk Decreased To

Moderate
 High
 Very High
 Present

High
 Moderate
 Low

Cancer of Bronchus; Lung
 Risk Increased To
 Risk Decreased To

Moderate
 High
 Very High
 Present

High
 Moderate
 Low

Cancer of Prostate
 Risk Increased To
 Risk Decreased To

Moderate
 High
 Very High
 Present

High
 Moderate
 Low

Cardiac Dysrhythmias

Condition Risk also enables selection of "Present" to capture patients diagnosed with a condition in the last 30 (or 90) days.

Chronic Kidney Disease
 Risk Increased To
 Risk Decreased To

Moderate
 High
 Very High
 Present

High
 Moderate
 Low

© 2021 Manifest Medex. All Rights Reserved.

Page 6 of 23

- c. The patient list reflects the Risk Class rather than the risk score, however if you hover over the Risk Class icon, you will see the risk score as well. In addition, the risk score will be used when sorting on a risk column in the patient list.

Showing 1 to 15 of 153,623 patients, ordered by Cost1Y descending.

Patient MPI	Last Name	First Name	DoB	Age	Gender	Cost	ALZ	AMI	Asthma	BackDis	CALung	CAProstate
326270	Cooke	Elmo	1980-12-30	37	Male	VH	L	M	H	L	L	L
326050	Brown	Lisa	1977-04-06	41	Female	VH	L	L	L	L	L	L
325715	Peterson	Edgar	1961-04-23	57	Male	VH ↑	L	L	L	L	L	L
325518	Nagel	Gertrude	1960-07-01	37	Female	VH	L	L	L	L	L	L
324977	Finn	Andrew	1939-04-02	79	Male	VH	L	VH	L	M	VH	L
323962	Bush	Phyllis	1986-08-18	31	Female	VH	L	L	M	L	L	L
323412	Cunningham	Thelma	1944-12-31	73	Female	VH	L	M	L	VH	VH	L
323245	Ng	Milhouse	1950-09-07	67	Male	VH	L	H ↑	L	L	M	H
322192	Fives	Al	1930-06-09	85+	Male	VH	L	L	L	M	L	H

Risk Name: Future Cost
Risk Score: \$26,400
Risk Class: Very High

The up arrow represents an increase in risk. P = Present, previously "100"

- d. On the Patient Profile both the Risk Class and Risk Score will be visible for each risk model.

Edgar Mastrolito (Male)
MPI: 319152
Status: Discharged
Date Of Birth: 1959-07-07 (Age 60)
PCP: N/A
Payer: Commercial
Address: Mock Street

Last 12 Months Statistics
IP ADMISSIONS: 0
ED VISITS: 3
OUTPATIENT VISITS: 0
MEDICAL COSTS: \$2,775

DATA SOURCE: EHR

Future 12 Months Risks

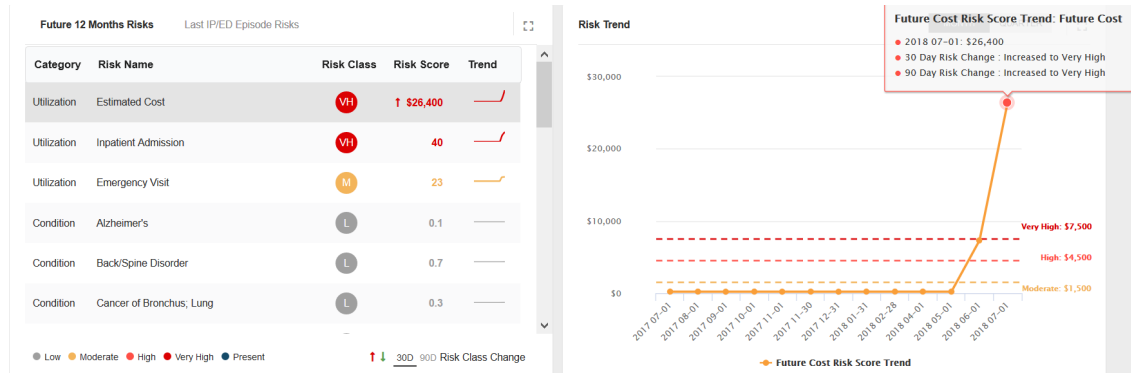
Category	Risk Name	Risk Class	Risk Score	Trend
Utilization	Estimated Cost	VH	\$26,400	↑
Utilization	Inpatient Admission	H	19	↑
Utilization	Emergency Visit	H	50	↑
Condition	Alzheimer's	L	0.1	—
Condition	Back/Spine Disorder	L	0.2	—
Condition	Cancer of Bronchus; Lung	L	0.1	—

Risk Trend

Future Cost Risk Score Trend: Future Cost
2018 07-01: \$26,400

Very High: \$7,500
High: \$4,500
Moderate: \$1,500

- e. If there is a change in Risk Class there will be an upward or downward arrow beside the score, as shown below next to the future cost prediction. In addition, the hover on the Risk Trend graph will include the Risk Class change(s) within the last 30 and 90 days.



Diagnosis and Disease Filters

Before reviewing the new filter capabilities in detail, it is important to understand the high-level changes within the “Dx and Disease” filter page and how these filters work together as well as with filters from other categories.

There are 5 main changes:

1. The Diagnosis and Disease Filter page has been divided into 4 sections: Acute Disease Group, Chronic Disease Group, Factors Influencing Health Group, and Other Filters.
2. Acute Disease Group is now available in addition to Acute Disease. This enables selection of an entire category of acute disease, individual acute diseases, or a combination of both. These two filters make up the Acute Disease Group.
3. Chronic Disease Group is now available in addition to Chronic Disease. This enables selection of an entire category of chronic disease, individual chronic diseases, or a combination of both. These two filters make up the Chronic Disease Group.

4. The Factors Influencing Health Status filter has been broken out into 3 filters: Social Determinants of Health, BMI & Lifestyle Factors, and Other Factors Influencing Health. These three filters make up the Factors Influencing Health Group.
5. Two new filters have been added, Pregnant Status and Tobacco Use. These filters join the Chronic Disease Count and Medication Therapeutic Class filters to form the Other Filters group.

Filters

- Demographic
- Attribution
- Geographic
- Dx and Disease
- Population Risk
- Risk Class Change

Note for this filter section

- Selections within a filter or a filter group function as an "OR"
- Selections between filter groups and other filters function as an "AND"

ACUTE DISEASE GROUP

<p>Acute Disease Group</p> <p>0 group selected Q</p>	<p>Acute Disease</p> <p>0 disease selected Q</p>
---	---

CHRONIC DISEASE GROUP

<p>Chronic Disease Group</p> <p>0 group selected Q</p>	<p>Chronic Disease</p> <p>0 disease selected Q</p>
---	---

FACTORS INFLUENCING HEALTH GROUP

<p>Social Determinants of Health</p> <p>0 factor selected Q</p>	<p>BMI & Lifestyle Factors</p> <p>0 factor selected Q</p>	<p>Other Factors Influencing Health</p> <p>0 factor selected Q</p>
--	--	---

OTHER FILTERS

<p>Chronic Disease Count</p> <p>Click to select -</p>	<p>Pregnant Status</p> <p>Click to select -</p>	<p>Tobacco Use</p> <p>Click to select -</p>
--	--	--

Medication: Therapeutic Class

0 therapeutic class selected Q

Understanding Filter Behavior

Selections within a single filter dropdown or Filter Group use an OR clause. Selections across Filter Groups and filters not within the “Dx and Disease” filter use an AND clause. For example:

- If both the first and second category in a dropdown are selected, the system will return individuals with diagnoses in EITHER of those ranges selected.
- If selections are made in both the Chronic Disease Group filter and the Chronic Disease filter (two filters within a single filter group), the individuals returned will have at least one diagnosis that meets any of the diagnoses selected.
- However, if an Age filter and one or more Social Determinants of Health (SDOH) filters are used in addition to the Chronic Disease Group and Chronic Disease filters, the system will limit the returned population to just those individuals within the selected age range, with the selected SDOH attributes, AND with at least one matching diagnosis. For example:
 - Age Range 50-74 AND
 - Homeless AND
 - I50 Heart Failure OR any one or more chronic diseases within the Chronic Disease Group
100-199 Diseases of the Circulatory System

Understanding the New Filters in Detail

The following new filters have been added:

1. Acute Disease Group

This filter enables selection of an ICD-10 Group, rather than having to select multiple related ICD-10 codes. When one or more Acute Disease Groups are selected, patients with an acute diagnosis (primary or secondary), as defined by the AHRQ, within the last 12 months within the selected code range(s) will be included in the population. Filters behave as described in the previous section.

The options within this filter include:

A00-B99	Certain infectious and parasitic diseases
C00-D49	Neoplasms
D50-D89	Diseases of the blood and blood-forming organs and certain disorders involving the immune mechanism
E00-E89	Endocrine, nutritional, and metabolic diseases
F01-F99	Mental, behavioral and neurodevelopmental disorders
G00-G99	Diseases of the nervous system
H00-H59	Diseases of the eye and adnexa
H60-H95	Diseases of the ear and mastoid process
I00-I99	Diseases of the circulatory system
J00-J99	Diseases of the respiratory system
K00-K95	Diseases of the digestive system
L00-L99	Diseases of the skin and subcutaneous tissue
M00-M99	Diseases of the musculoskeletal system and connective tissue
N00-N99	Diseases of the genitourinary system
O00-O9A	Pregnancy, childbirth, and the puerperium
P00-P96	Certain conditions originating in the perinatal period
Q00-Q99	Congenital malformations, deformations, and chromosomal abnormalities
R00-R99	Symptoms, signs, and abnormal clinical and laboratory findings, not elsewhere classified
S00-T88	Injury, poisoning and certain other consequences of external causes
V00-Y99	External causes of morbidity

2. Chronic Disease Group

This filter enables selection of an ICD-10 Group, rather than having to select multiple related ICD-10 codes. When one or more Chronic Disease Groups are selected, patients with a chronic diagnosis (primary or secondary), as defined by the AHRQ, within the last 24 months within the selected code range(s) will be included in the population. Filters behave as described in the previous section.

The options within this filter include:

A00-B99	Certain infectious and parasitic diseases
C00-D49	Neoplasms
D50-D89	Diseases of the blood and blood-forming organs and certain disorders involving the immune mechanism
E00-E89	Endocrine, nutritional, and metabolic diseases
F01-F99	Mental, behavioral and neurodevelopmental disorders
G00-G99	Diseases of the nervous system
H00-H59	Diseases of the eye and adnexa
H60-H95	Diseases of the ear and mastoid process
I00-I99	Diseases of the circulatory system
J00-J99	Diseases of the respiratory system
K00-K95	Diseases of the digestive system
L00-L99	Diseases of the skin and subcutaneous tissue
M00-M99	Diseases of the musculoskeletal system and connective tissue
N00-N99	Diseases of the genitourinary system
O00-O9A	Pregnancy, childbirth, and the puerperium
P00-P96	Certain conditions originating in the perinatal period
Q00-Q99	Congenital malformations, deformations, and chromosomal abnormalities
R00-R99	Symptoms, signs, and abnormal clinical and laboratory findings, not elsewhere classified
S00-T88	Injury, poisoning and certain other consequences of external causes
V00-Y99	External causes of morbidity

3. Pregnant Status

There may be times when it is advantageous to exclude individuals who are pregnant, for example when focused on those with an increased risk for IP admission as every pregnant woman is by nature at high risk for an IP admission but not otherwise at high risk.

Likewise, there may be times when the focus is solely on individuals who are pregnant – perhaps identifying those with chronic conditions, specific chronic conditions, or at high risk due to age. This filter looks for a pregnancy related primary or secondary diagnosis.

The filter options are Yes or No:

- If Yes is selected, the population will be limited to female individuals over the age of 9, and under the age of 55, with a diagnosis of pregnancy.
- If No is selected, individuals who have a pregnancy diagnosis are excluded from the population.
- An individual is counted as pregnant when one or more of these ICD-10 codes is present within the last 12 months:

ICD-10 Code	Description
O09	Supervision of high-risk pregnancy
O10	Pre-existing hypertension complicating pregnancy, childbirth and the puerperium
O11	Pre-existing hypertension with pre-eclampsia
O12	Gestational [pregnancy-induced] edema and proteinuria without hypertension
O13	Gestational [pregnancy-induced] hypertension without significant proteinuria
O14	Pre-eclampsia
O15	Eclampsia
O16	Unspecified maternal hypertension
O20	Hemorrhage in early pregnancy
O21	Excessive vomiting in pregnancy
O22	Venous complications and hemorrhoids in pregnancy
O23	Infections of genitourinary tract in pregnancy
O24	Diabetes Mellitus in pregnancy, childbirth and the puerperium
O25	Malnutrition in pregnancy, childbirth and the puerperium
O26	Maternal care for other conditions predominantly related to pregnancy
O28	Abnormal findings on antenatal screening of mother
O29	Complications of anesthesia during pregnancy
O30	Multiple gestation
O33	Maternal care for disproportion
O34	Maternal care for abnormality of pelvic organs
O35	Maternal care for known or suspected fetal abnormality and damage
O36	Maternal care for other fetal problems
O40	Polyhydramnios
O41	Other disorders of amniotic fluid and membranes
O42	Premature rupture of membranes

O43	Placental disorders
O44	Placenta previa
O45	Premature separation of placenta (abruptio placentae)
O46	Antepartum hemorrhage, not elsewhere classified
O47	False labor
O48	Late pregnancy
O60	Preterm labor
O71	Other obstetric trauma
O88	Obstetric embolism
O91	Infections of breast associated with pregnancy, the puerperium and lactation
O92	Other disorders of breast and disorders of lactation associated with pregnancy and the puerperium
O98	Maternal infectious and parasitic diseases classifiable elsewhere but complicating pregnancy, childbirth and the puerperium
O99	Other maternal diseases classifiable elsewhere but complicating pregnancy, childbirth and the puerperium
O9A	Maternal malignant neoplasms, traumatic injuries and abuse classifiable elsewhere but complicating pregnancy, childbirth and the puerperium

4. Tobacco Use

The filter options are Yes or No:

- If Yes is selected, the population will be limited to individuals with nicotine dependence in any form, as indicated by any of the following ICD-10 codes, documented as a primary or secondary diagnosis within the last 12 months in individuals 10 years or older:
 - F17.200 Nicotine dependence, unspecified, uncomplicated
 - F17.210 Nicotine dependence, cigarettes, uncomplicated
 - F17.220 Nicotine dependence, chewing tobacco, uncomplicated
 - F17.290 Nicotine dependence, other tobacco product, uncomplicated
- If No is selected, the population will be limited to individuals without documented nicotine dependence.

5. SDOH and Lifestyle Factors

The Social Determinants of Health (SDOH) & Lifestyle Factors (Z Codes) filter was broken out into 3 filters, with 2 of the 3 filters expanded beyond the decimal point. Selections within these 3 filters use an OR clause as described on page 11.

The SDOH filter will limit the population to individuals with one or more of these 70 multi-select codes documented within the past 12 months.

- Z55.0 Illiteracy and low-level literacy
- Z55.1 Schooling unavailable and unattainable
- Z55.2 Failed school examinations
- Z55.3 Underachievement in school
- Z55.4 Educational maladjustment & discord w teachers & classmates
- Z55.8 Other problems related to education and literacy
- Z55.9 Problems related to education and literacy, unspecified
- Z56.0 Unemployment, unspecified
- Z56.1 Change of job
- Z56.2 Threat of job loss
- Z56.3 Stressful work schedule
- Z56.4 Discord with boss and workmates
- Z56.5 Uncongenial work environment
- Z56.6 Other physical and mental strain related to work
- Z56.8 Other problems related to employment
- Z56.9 Unspecified problems related to employment
- Z57.0 Occupational exposure to noise
- Z57.1 Occupational exposure to radiation
- Z57.2 Occupational exposure to dust
- Z57.3 Occupational exposure to other air contaminants
- Z57.4 Occupational exposure to toxic agents in agriculture
- Z57.5 Occupational exposure to toxic agents in other industries
- Z57.6 Occupational exposure to extreme temperature
- Z57.7 Occupational exposure to vibration
- Z57.8 Occupational exposure to other risk factors

- Z57.9 Occupational exposure to unspecified risk factor
- Z59.0 Homelessness
- Z59.1 Inadequate housing
- Z59.2 Discord with neighbors, lodgers and landlord
- Z59.3 Problems related to living in residential institution
- Z59.4 Lack of adequate food and safe drinking water
- Z59.5 Extreme poverty
- Z59.6 Low income
- Z59.7 Insufficient social insurance and welfare support
- Z59.8 Other problems related to housing and economic circumstances
- Z59.9 Problem related to housing and economic circumstances, unsp
- Z60.0 Problems of adjustment to life-cycle transitions
- Z60.2 Problems related to living alone
- Z60.3 Acculturation difficulty
- Z60.4 Social exclusion and rejection
- Z60.5 Target of (perceived) adverse discrimination and persecution
- Z60.8 Other problems related to social environment
- Z60.9 Problem related to social environment, unspecified
- Z62.0 Inadequate parental supervision and control
- Z62.1 Parental overprotection
- Z62.2 Upbringing away from parents
- Z62.3 Hostility towards and scapegoating of child
- Z62.6 Inappropriate (excessive) parental pressure
- Z62.8 Other specified problems related to upbringing
- Z62.9 Problem related to upbringing, unspecified
- Z63.0 Problems in relationship with spouse or partner
- Z63.1 Problems in relationship with in-laws
- Z63.3 Absence of family member
- Z63.4 Disappearance and death of family member
- Z63.5 Disruption of family by separation and divorce

- Z63.7 Other stressful life events affecting family and household
- Z63.8 Other specified problems related to primary support group
- Z63.9 Problem related to primary support group, unspecified
- Z64.0 Problems related to unwanted pregnancy
- Z64.1 Problems related to multiparity
- Z64.4 Discord with counselors
- Z65.0 Conviction in civil & criminal proceedings w/o imprisonment
- Z65.1 Imprisonment and other incarceration
- Z65.2 Problems related to release from prison
- Z65.3 Problems related to other legal circumstances
- Z65.4 Victim of crime and terrorism
- Z65.5 Exposure to disaster, war and other hostilities
- Z65.8 Oth problems related to psychosocial circumstances
- Z65.9 Problem related to unspecified psychosocial circumstances

6. BMI and Lifestyle Factors

The BMI and Lifestyle Factors filter will limit the population to individuals with one or more of these 15 multi-select codes documented within the past 12 months.

- Z68.1 Body mass index (BMI) 19.9 or less, adult
- Z68.2 Body mass index (BMI) 20-29, adult
- Z68.3 Body mass index (BMI) 30-39, adult
- Z68.4 Body mass index (BMI) 40 or greater, adult
- Z68.51 BMI pediatric, less than 5th percentile for age
- Z68.52 BMI pediatric, 5th percentile to less than 85% for age
- Z68.53 BMI pediatric, 85% to less than 95th percentile for age
- Z68.54 BMI pediatric, greater than or equal to 95% for age
- Z72.0 Tobacco use
- Z72.3 Lack of physical exercise
- Z72.4 Inappropriate diet and eating habits
- Z72.5 High risk sexual behavior
- Z72.6 Gambling and betting
- Z72.8 Other problems related to lifestyle
- Z72.9 Problem related to lifestyle, unspecified

7. Other Factors Influencing Health

The Other Factors Influencing Health filter will limit the population to individuals with one or more of the selected codes documented within the past 12 months.

The Other Factors Influencing Health, include these remaining 78 multi-select codes:

- Z00 Encntr for general exam w/o complaint, susp or reprtd dx
- Z01 Encntr for oth sp exam w/o complaint, suspected or reprtd dx
- Z02 Encounter for administrative examination
- Z03 Encntr for medical obs for susp diseases and cond ruled out
- Z04 Encounter for examination and observation for other reasons
- Z05 Enctr for Obs & eval of NB for susp diseases and cond R/O
- Z08 Encntr for follow-up exam after trtmt for malignant neoplasm
- Z09 Encntr for f/u exam aft trtmt for cond oth than malig neoplsm
- Z11 Encounter for screening for infec/parastc diseases
- Z12 Encounter for screening for malignant neoplasms
- Z13 Encounter for screening for other diseases and disorders
- Z14 Genetic carrier
- Z15 Genetic susceptibility to disease
- Z16 Resistance to antimicrobial drugs
- Z17 Estrogen receptor status
- Z18 Retained foreign body fragments
- Z19 Hormone sensitivity malignancy status
- Z20 Contact w and (suspected) exposure to communicable diseases
- Z21 Asymptomatic human immunodeficiency virus infection status
- Z22 Carrier of infectious disease
- Z23 Encounter for immunization
- Z28 Immunization not carried out and underimmunization status
- Z29 Encounter for other prophylactic measures
- Z30 Encounter for contraceptive management
- Z31 Encounter for procreative management

- Z32 Encntr for preg test and chldbrth and childcare instruction
- Z33 Pregnant state
- Z34 Encounter for supervision of normal pregnancy
- Z36 Encounter for antenatal screening of mother
- Z37 Outcome of delivery
- Z38 Liveborn infants according to place of birth and type of del
- Z39 Encounter for maternal postpartum care and examination
- Z3A Weeks of gestation
- Z40 Encounter for prophylactic surgery
- Z41 Encntr for proc for purposes oth than remedying health state
- Z42 Encntr for plast/recnst surg fol med proc or healed injury
- Z43 Encounter for attention to artificial openings
- Z44 Encounter for fit/adjst of external prosthetic device
- Z45 Encounter for adjustment and management of implanted device
- Z46 Encounter for fitting and adjustment of other devices
- Z47 Orthopedic aftercare
- Z48 Encounter for other postprocedural aftercare
- Z49 Encounter for care involving renal dialysis
- Z51 Encounter for other aftercare and medical care
- Z52 Donors of organs and tissues
- Z53 Persons encntr hlth serv for spec proc & trtmt, not crd out
- Z66 Do not resuscitate
- Z67 Blood type
- Z69 Encntr for mental health serv for victim and perp of abuse
- Z70 Counseling related to sexual attitude, behavior and orientn

Other Enhancements

Last Refreshed

In the upper left-hand corner of the dashboard is the “Last Refreshed” date which provides clarity around the last data refresh date. This date will reflect the last update to the data, which may be refreshed monthly, daily, or both.

Back Button

A back button has been added to the Individual Risk view so that the user can retain the sort and filters set in the Population Risk view or the Quality Measure view upon return.

